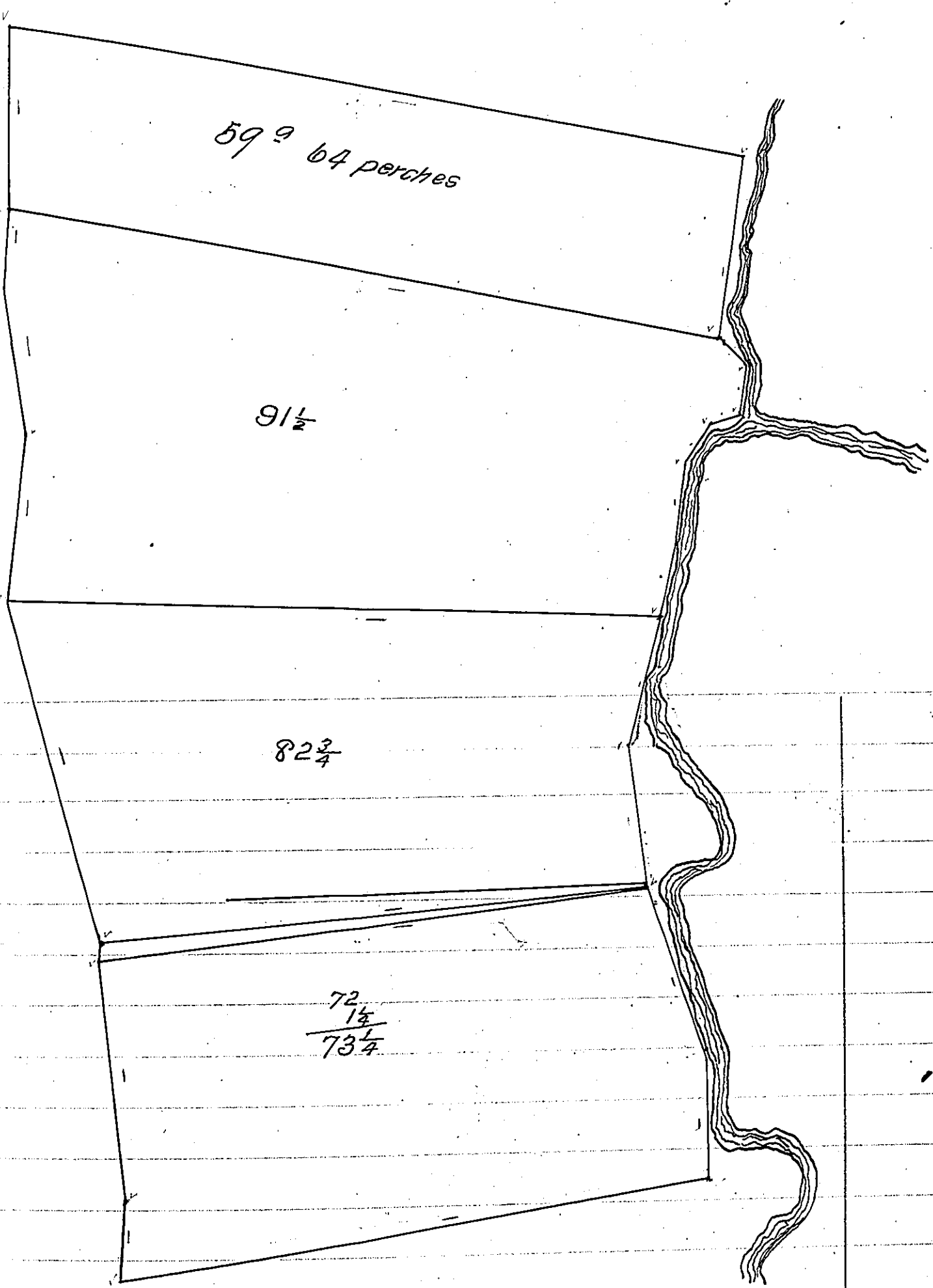


FORM No. 1.

$\frac{74}{62}$	$\frac{171}{68}$	$\frac{72}{128}$	$\frac{206}{77}$	$\frac{69}{86}$	$\frac{198}{48}$
$\frac{136}{68}$	$\frac{1026}{16628}$	$\frac{62}{1442}$	$\frac{1442}{18862}$	$\frac{154}{77}$	$\frac{1584}{792}$
	$\frac{2907}{72}$		$\frac{3966}{916}$		$\frac{9604}{2376}$
					$\frac{594}{594}$

2



$\frac{160}{9600}$
 $\frac{9504}{96}$
 $\frac{64}{160}$

IN TESTIMONY that the above is a copy of the original remaining on file in the Department of Internal Affairs of Pennsylvania, made conformably to an Act of Assembly approved the 16th day of February, 1833, I have hereunto set my Hand and caused the Seal of said Department to be affixed at Harrisburg, this FOURTH day of AUGUST 1909

Henry Houch
 Secretary of Internal Affairs.